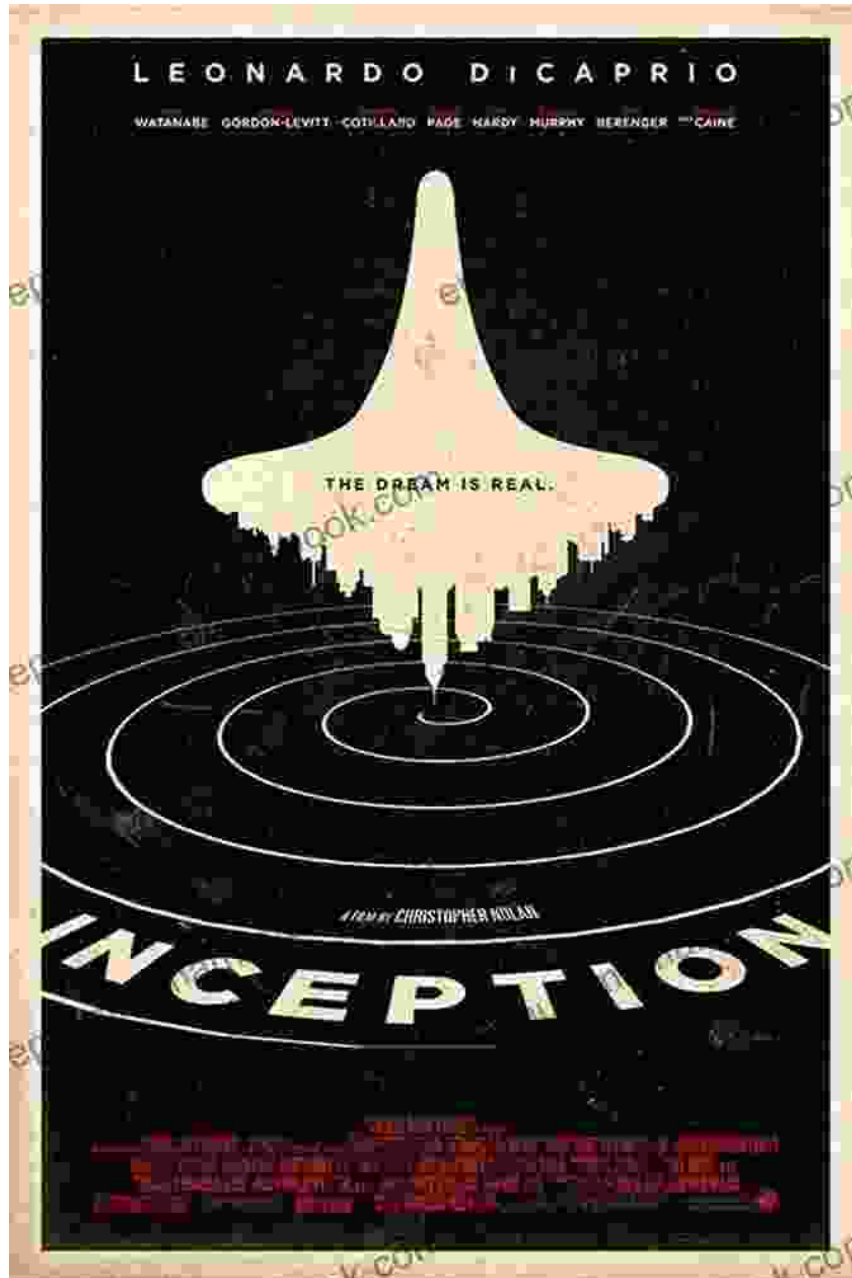
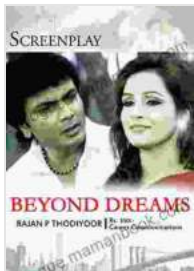


Beyond Dreams: An Analysis of George Bernard Shaw's Intriguing Screenplay



George Bernard Shaw, the renowned Irish playwright, essayist, and critic, ventured into the realm of screenwriting with his remarkable work, *Beyond Dreams*. This screenplay, written in 1934, showcases Shaw's wit,

philosophical insights, and unconventional approach to storytelling. Beyond Dreams invites viewers into a surreal and thought-provoking world, where the boundaries between reality and dreams blur.



BEYOND DREAMS: Screenplay by George Bernard Shaw

★★★★☆ 4.1 out of 5

Language	: English
Paperback	: 24 pages
Item Weight	: 2.88 ounces
Dimensions	: 5.5 x 0.06 x 8.5 inches
File size	: 3433 KB
Text-to-Speech	: Enabled
Screen Reader	: Supported
Enhanced typesetting	: Enabled
Print length	: 89 pages
Lending	: Enabled



Synopsis

Beyond Dreams centers around a group of disillusioned individuals who find solace and escape in a shared dream world. The screenplay follows the protagonist, a young woman named Celia Copplestone, who is plagued by nightmares and seeks refuge in a seaside guesthouse. There, she encounters a diverse cast of characters, including a retired physician, a disillusioned artist, a discontented actress, and a cynical playwright.

As they share their stories and dreams, Celia and her companions discover that they are all haunted by unfulfilled aspirations and secret desires. Driven by a longing for something more, they embark on a journey into the subconscious, where their hopes, fears, and fantasies intertwine.

Themes

Beyond Dreams explores a multitude of complex themes, including:

- **The Power of Dreams:** Dreams are presented as a potent force that can provide solace, inspiration, and a glimpse into the depths of the human psyche.
- **The Illusion of Reality:** Shaw challenges conventional notions of reality, suggesting that dreams and waking life are equally valid and subjective experiences.
- **The Search for Meaning:** The characters in Beyond Dreams embark on a quest for meaning and purpose, both in their dreams and in their waking lives.
- **The Failure of Society:** Shaw critiques the failures of society to provide fulfillment and happiness to its members.

Character Analysis

The characters in Beyond Dreams are richly developed and complex, embodying different facets of human experience.

- **Celia Coplestone:** The protagonist, Celia is a young woman haunted by nightmares and seeking solace in a shared dream world.
- **Dr. Paramore:** A retired physician who finds purpose and fulfillment in helping others.
- **Lady Utterword:** A disillusioned artist struggling with her identity and the limitations imposed by society.

- **Miss Slattery:** A discontented actress who yearns for a meaningful role.
- **Mr. Lubin:** A cynical playwright who uses dreams to escape from the harsh realities of life.

Style and Structure

Beyond Dreams is unconventional in its style and structure. Shaw employs a non-linear narrative, blending dream sequences with waking life, and blurring the lines between reality and fantasy. The screenplay is characterized by its witty dialogue, philosophical musings, and exploration of subconscious landscapes.

Influence and Legacy

Despite its limited production history, Beyond Dreams has had a profound influence on the world of cinema and literature. Its groundbreaking exploration of dreams and the subconscious paved the way for future filmmakers and writers to delve into the realm of surrealism and psychological drama.

Modern Adaptations

In recent years, there have been several modern adaptations of Beyond Dreams. In 2011, a six-part British miniseries was produced, starring Timothy Spall and Diana Quick. In 2015, a stage adaptation premiered in London, directed by Richard Eyre.

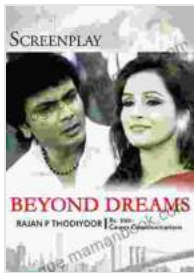
Critical Reception

Beyond Dreams has received mixed critical reception over the years. Some critics have praised its originality and philosophical depth, while others

have found it too abstract and difficult to follow. Despite its polarizing nature, *Beyond Dreams* remains a significant work in Shaw's oeuvre, challenging conventional storytelling and inviting viewers to ponder the nature of reality and the human experience.

George Bernard Shaw's *Beyond Dreams* is a thought-provoking and imaginative screenplay that explores the power of dreams, the fluidity of reality, and the search for meaning. Its unconventional style and complex themes have made it a lasting work of art, inspiring generations of filmmakers, writers, and audiences alike.

Beyond Dreams encourages us to embrace the power of imagination, to question the boundaries of our perceived reality, and to strive for a life filled with purpose and fulfillment.

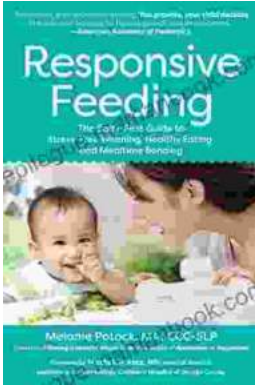


BEYOND DREAMS: Screenplay by George Bernard Shaw

★★★★☆ 4.1 out of 5

Language	: English
Paperback	: 24 pages
Item Weight	: 2.88 ounces
Dimensions	: 5.5 x 0.06 x 8.5 inches
File size	: 3433 KB
Text-to-Speech	: Enabled
Screen Reader	: Supported
Enhanced typesetting	: Enabled
Print length	: 89 pages
Lending	: Enabled





The Baby First Guide to Stress-Free Weaning: Healthy Eating and Mealtime Bonding

Weaning your baby is a significant milestone in both your and your little one's lives. It is a transition from exclusive breastfeeding or formula feeding to introducing...



Bumble Boogie: An Infectious Swing Classic by Freddy Martin

III I IIIIII : In the annals of American popular music, "Bumble Boogie" stands as an enduring testament to the infectious energy and virtuosic swing sound that...